





OUR MISSION

Consolidated Project Management is a UAE based ISO certified multi discipline consultancy with registered office in the UK that provides unique services to clients in the Construction Industry.

The company’s management team has combined Project Management Experience over decades in the Middle East region & Europe.

To provide a comprehensive management begins when the project is an idea & continue along with its life cycle.

To look for our client’s best interest in an environment where our staff is valued & challenged.

To deliver exceptional Project Management Services to our clients to meet the unique needs of their projects.

**“ WE BELIEVE IN A PHILOSOPHY THAT POSITIONS
OUR CLIENT IN THE CORE OF OUR BUSINESS ”**

Managing Director

OUR

HISTORY

OUR HISTORY

We celebrate the past and build for the future. We look to the past for guidance. We look to the future for challenge, opportunity and growth.

Throughout all “past, present and future” we look to our clients and staff knowledge and the courage to make us what we are today: a premier organization in Middle East.

Since its conception CPM has gained a reputation of providing the highest levels of professional management & consulting services to the construction industry.

This progression has allowed us to streamline operations, standardize our methodologies, granted the ISO 9001:2000 QMS certificate and has marked the birth of a new corporation culture.

Our professional expertise and deep understanding of local conditions ensure that our clients realize projects that are not only completed on time & within budget, but also function as they should without complication.

SECTORS

Our senior managers have vast experiences leading various pioneer projects in the United Arab Emirates & United Kingdom not limited to:

- | | |
|-------------------------|--------------------------|
| ➤ Commercial Real state | ➤ Schools & Universities |
| ➤ Corporate real state | ➤ Airports |
| ➤ Retail | ➤ Infrastructure |
| ➤ Residential | ➤ Roads & Highways |
| ➤ Mixed use Building | ➤ Bridges |
| ➤ Housing | ➤ Civil & Utilities |
| ➤ Shopping Malls | ➤ Enabling Works |
| ➤ Banks | |

OUR

BENEFITS

OUR BENEFITS

Our clients benefit from a single point of management responsibility for planning, design management, permitting compliance, construction management services.

We listen to our clients: understand their business objective, advise them, then...define, plan, implement, integrate every aspect of each project.

We optimize time, quality & cost in all our work to ensure financial success.

CPM provides the following benefits

- ▶ Independent evaluation of the cost, schedules and overall construction performance.
- ▶ Full time coordination between design and construction.
- ▶ Minimum design-construction time by using phased construction.
- ▶ Allows price competition from contractors as well as sub contractors.
- ▶ Facilitates claims avoidance.

We strive to earn the lasting trust of our clients to have them see us as their partners in the work we do together.

We earn trust by offering them value beyond their expectations. We speak amongst ourselves of hallmarks...the characteristics they see as important and that we would like to be measured by:

- ▶ We look to provide a relationship that fits seamlessly with their own internal organization.
- ▶ We look to redefine the parameters of traditional land-development engineering.

OUR EDGE

A construction management firm earns a reputation, and the reputation is earned through the firm's ability to deliver projects on time & within budget.

We always seek to be "up to speed" with modern technological developments.

Our benefits commitments are to improve communication, avoidance of claims, enhanced cooperation, cost and time efficiencies, effective scheduling, monitoring, and control of work.

We expertise in program management which provides the link between our clients business strategies. And their objectives in appropriate system for overall monitoring and control.

Our Services

OUR SERVICES

Project Management services can help you keep multiple, interrelated projects in sync, on time and within budget. We help Clients and others reduce the uncertainty and risk in their capital programs. Our managers review every detail of all projects, set-up objectives; plans and priorities manage and control the process, and identify and resolve problems.

Our services in a horizontal view have five Keys:

- ▶ **FLEXIBILITY**
Our services aim to be flexible and adaptable to particular needs, whatever the requirements of the individual project or organization, providing comprehensive project solutions.
- ▶ **COST**
Cost management lies at the heart of any integrated design process that delivers real value. We would add more value by supplementing the traditional core service with specialized skills and innovations.
- ▶ **TIME**
We schedule all our work processes to match the time value of money.
- ▶ **QUALITY**
As an ISO certified firm, it is our sole role to guarantee the high caliber of execution, and quality control throughout the life cycle of the project.
- ▶ **RISK**
Identify, quantify, manages and avoid where possible.
- ▶ **CUSTOMER SATISFACTION**
We resolve all interest conflict between project stakeholders in the favour of our customer benefit.

WATERFRONT - DUBAI-UAE



Our Serices

OUR SERVICES

We act in supporting of all our project function from conception. Our services have three stages.

Pre Design and Design Management

CPM provides pre-design management services to ensure quality & understand time & Cost Saving during the initial phase of the project life cycle. These services are:

- ▶ Program & requirements Definition
- ▶ Feasibility Studies
- ▶ Site Selection & Planning
- ▶ Financing Analysis & Planning
- ▶ Design Consultant's Selection
- ▶ Project Planning and Scheduling
- ▶ Cost Estimating
- ▶ Design Review & Management.
- ▶ Regulatory / Approval Management
- ▶ Value Engineering & Life Cycle Analysis.
- ▶ Tender Management

Construction Management

CPM provides construction Management and organization of all the building resources including labor, equipment, materials, technology, time and money, to ensure the project is complete on time within budget and according to the standards of quality specified by the designers.

These services are as follow:

- ▶ Cost Control and Reporting.
- ▶ Scheduling Control and Reporting.
- ▶ Contract Administration
- ▶ Construction Supervision.
- ▶ Safety Management.
- ▶ Claims Management.
- ▶ Procurement Management.

Post Construction Management

CPM offers significant effort towards successful turn over in the project management to ensure the quality of the completion of construction phase and initiates the occupancy.

These services are as follows.

- ▶ Operation and Maintenance Planning
- ▶ Start-up Assistant
- ▶ Move-in assistant
- ▶ Warranty Review
- ▶ As built up Drawing Management
- ▶ Facilities Management

Our Experiences
OUR EXPERIENCES

PROJECT NAME

LOCATION

Bank Melli Iran
Bank Melli Iran
Laleh
Nilloofar
Shaghayegh
Nastaran
Yaass
Banafsheh
K.P.M Tower

Sharjah-UAE
Jable Ali Free Zone, Dubai-UAE
Al Jadaf (Culture Village) Dubai-UAE
Al Jadaf (Culture Village) Dubai-UAE
Al Jadaf (Culture Village) Dubai-UAE
Al Jadaf (Culture Village) Dubai-UAE
Al Jadaf (Culture Village) Dubai-UAE
Al Jadaf (Culture Village) Dubai-UAE
Dubai Marina, Dubai-UAE



ALFRED 2 - DUBAI-UAE



CHESS - DUBAI-UAE



SORAYA TOWER - DUBAI-UAE



AMIR - DUBAI-UAE

Our Experiences

OUR EXPERIENCES

PROJECT NAME

LOCATION

My Tower	Dubai Marina, Dubai UAE
Dolce Vita	Dubai Marina, Dubai UAE
Jouri 1	Jumeira Village Circle-Dubai, Dubai UAE
Jouri 2	Jumeira Village Circle-Dubai, Dubai UAE
Jouri 3	Jumeira Village Circle-Dubai, Dubai UAE
Jouri 4	Jumeira Village Circle-Dubai, Dubai UAE
Jouri 5	Jumeira Village Circle-Dubai, Dubai UAE
Jouri 6	Jumeira Village Circle-Dubai, Dubai UAE
Orchid Residence	Jumeira Village Circle-Dubai, Dubai UAE



A05 - DUBAI-UAE

SHAGHAYEGH - DUBAI-UAE

JOURI 5 - DUBAI-UAE

E023 PERSPECTIVE - DUBAI-UAE

Our Experiences

OUR EXPERIENCES

PROJECT NAME

LOCATION

Romeo & Juliet

Judi Palace 1 & 2

Soraya Tower 1

Sahara Living

Soraya Tower 2

JVC 15BMRM002

CADI 1

CADI 2

CADI 3

Jumeira Village Circle-Dubai, Dubai UAE

Jumeira Village Circle-Dubai, Dubai UAE

Jumeira Village Circle-Dubai, Dubai UAE

Dubai Industrial City

Al Furjan, Dubai-UAE

Jumeira Village Circle-Dubai, Dubai UAE

Jumeira Village Circle-Dubai, Dubai UAE

Jumeira Village Circle-Dubai, Dubai UAE

Jumeira Village Circle-Dubai, Dubai UAE



WORLD WIDE TOWER - DUBAI-UAE



JVC15B MRM - DUBAI-UAE



JOURI 4 - DUBAI-UAE



ALFRED - DUBAI-UAE

Our Services

OUR SERVICES

PROJECT NAME

CADI 4
CADI 5
14T008
11CC008
SETAREH
AL MASADER
CHESS TOWER
PARIZ TOWER
DAMAVAND

LOCATION

Jumeira Village Circle-Dubai, Dubai UAE
Jumeira Village Circle-Dubai, Dubai UAE
Jumeira Village South, Dubai UAE
Jumeira Village South, Dubai UAE
Al Jadaf (Culture Village) Dubai-UAE
Al Jadaf (Culture Village) Dubai-UAE
Sport City, Dubai-UAE
Ajman-UAE
Jumeira Village Circle, Dubai-UAE

CHESS TOWER - DUBAI-UAE



KPM 2&3 - DUBAI-UAE



JOURI 6 - DUBAI-UAE



JOURI 3 - DUBAI-UAE



JOURI 2 - DUBAI-UAE



CHESS TOWER - DUBAI-UAE



Our Experiences

OUR EXPERIENCES

PROJEC NAME

LOCATION

JULGEH

Jumeira Village Circle, Dubai-UAE

SHIVA TOWER

Downtown Jabel Ali, Dubai-UAE

AMIR TOWER

Downtown Jabel Ali, Dubai-UAE

NOOR TOWER

Downtown Jabel Ali, Dubai-UAE

ALFRED TOWER

Downtown Jabel Ali, Dubai-UAE

E-24

Al Jadaf (Culture Village) Dubai-UAE

E-23

Al Jadaf (Culture Village) Dubai-UAE

World Wide Tower

Jable Ali Free Zone, Dubai-UAE

KPM Tower II & III

Jumeira Village South, Dubai UAE

ORCHID RESIDENCE - DUBAI-UAE



JOURI 5 - DUBAI-UAE



JOURI 6 - DUBAI-UAE



Our Experiences

OUR EXPERIENCES

Roads.

Bridges.

Utilities.

Enabling Works.



Our Experiences

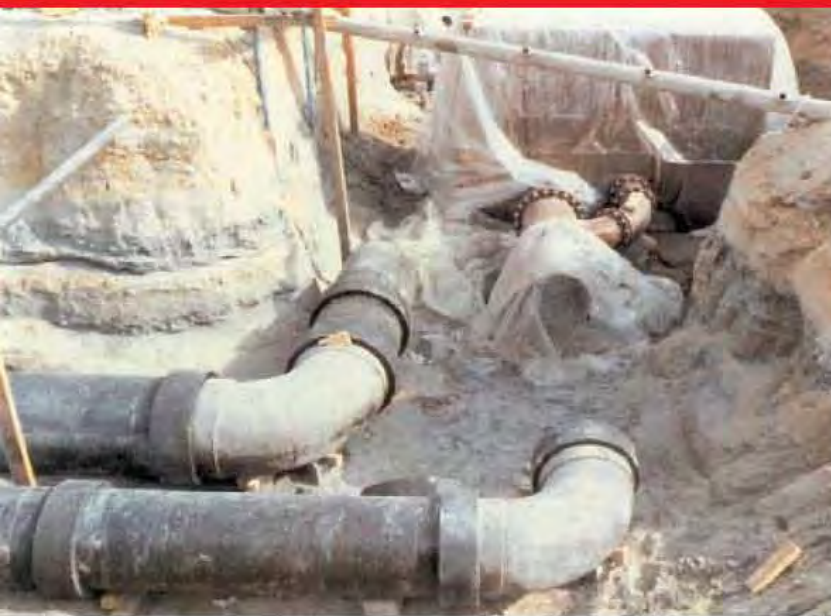
OUR EXPERIENCES

Roads.

Bridges.

Utilities.

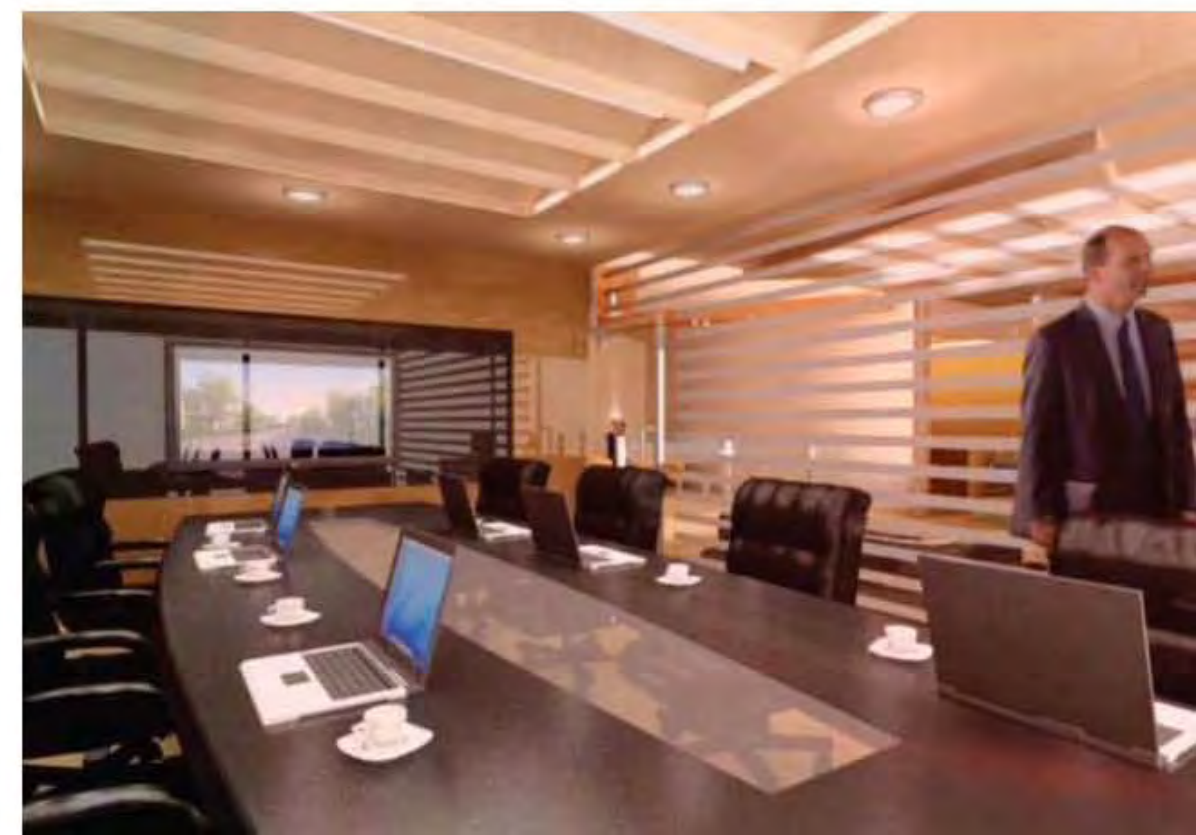
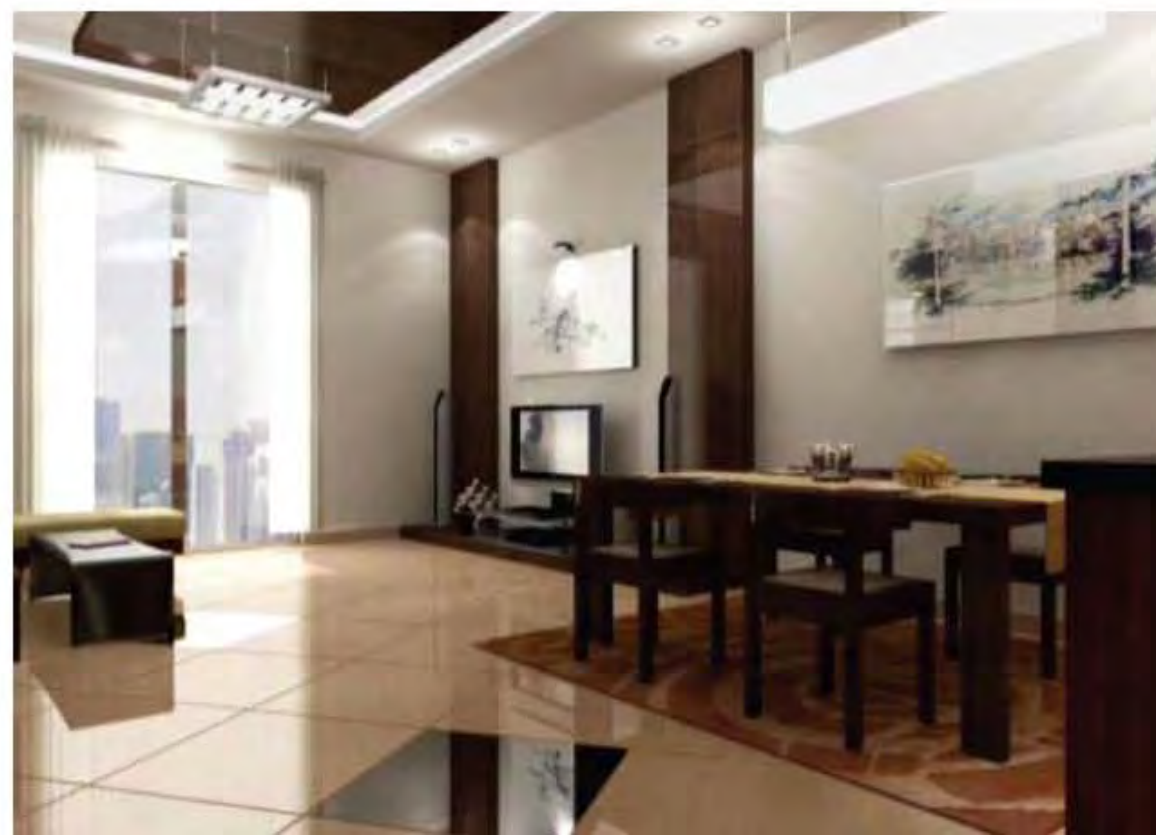
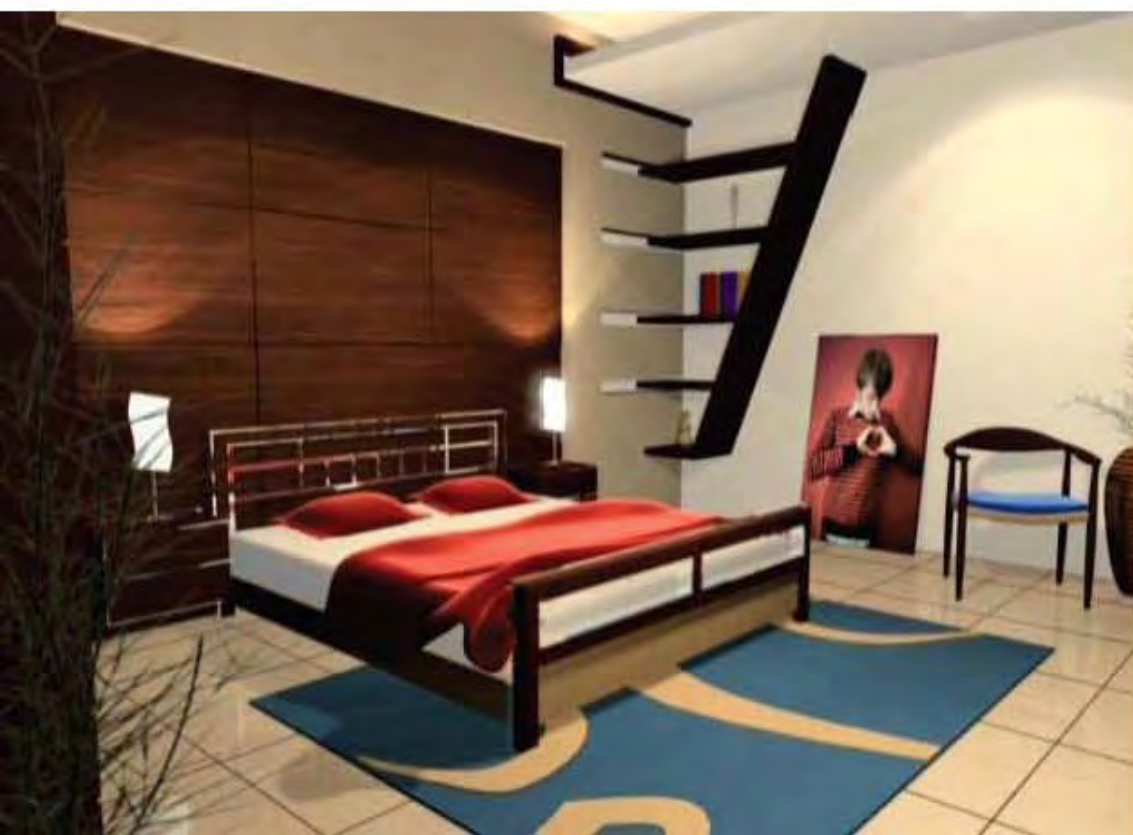
Enabling Works.



Our Experiences

OUR EXPERIENCES

INTERIORS.





OUR VISION

OUR VISION

- To be client first choice.
- We emphasize on a quality that sets us apart from our competitors.
- Our services aim to be flexible and adaptable to particular needs of projects.
- Our ambition is limitless.
- We will always focus on building strong relationships with our clients to understand their unique requirements and be acknowledged as a value-added service to their organization.
- We will deliver superior quality services through continuous of best practices, coupled with wealth of experience.
- We will provide an exciting, innovative environment in which senior Project Management professionals can thrive and be rewarded for their contributions.
- We will develop strategic partnerships with our clients whose core competency is not project management.
- We set Clear Targeted, Achievable, Measurable And Inspiring Goals.

OUR COMMITMENTS

OUR COMMITMENTS

► TO OUR BELIEVES

Our relationships & interaction with others should be based on the truth & the highest ethical standard.

► TO OURSELVES

We measure ourselves against the world's best practices and learn from our past experience.

► TO OUR PROFESSIONALISM

We aim to maintain & guarantee the very highest quality throughout our project management services.

► TO OUR CLIENT

We grant outstanding value to client's to make them achieve the maximum of our service.

► TO OUR PEOPLE

We foster an enjoyable work environment. We value supporting each other professionally & personally.

OUR

VALUES

OUR VALUES

► CORE VALUES

Honesty, Integrity, Respect, Dynamic Culture, and Passion.

► GUIDING PRINCIPLES

Teamwork, Mutual obligation, Safety, Effective Communication, Diversity, Mobility and Social Responsibility.

Aspiring to be the most respected manager, renowned for: Excellence, Leadership, Surpassed Value.

► DEDICATION TO EXCELLENCE

Our work products should be of the highest standard. Excel, using driver, initiative, and assuming responsibility.

Business leadership in a competitive marketplace requires many qualities. Predicting and meeting the future needs, as does the confidence to hold to one's path.

► TEAMWORK

Our people are special: We recognize & value their commitment & loyalty.

We believe open discussion & the sharing of ideas is as important as financial gain.

We relish the concept of teamwork.

Integrity is our middle name.

We embrace new experience and share it with others.

We each take responsibility for our own action.

► INNOVATION

Think outside the box. We value substantial different creativity & flexibility in our thinking. Continuously implement changes that add value to our services & improve our work processes.

► PROFESSIONALISM

Our services are built on proven best practices coupled with our practical experience and ability to adapt to our clients needs; and are implemented by accomplished professionals.

► CAREER DEVELOPMENT

Our staff are highly motivated & dedicated team. We have a policy of continuously implement changes that add value to our services.

► DISCIPLINE

We value disciplined thought. Work ethic & action. Persist & continuously follow-up to achieve objectives.

► RESPECT

We value our people's ideas, culture, views, and their knowledge. Demonstrate respect for clients, colleagues, competitors, and the public.